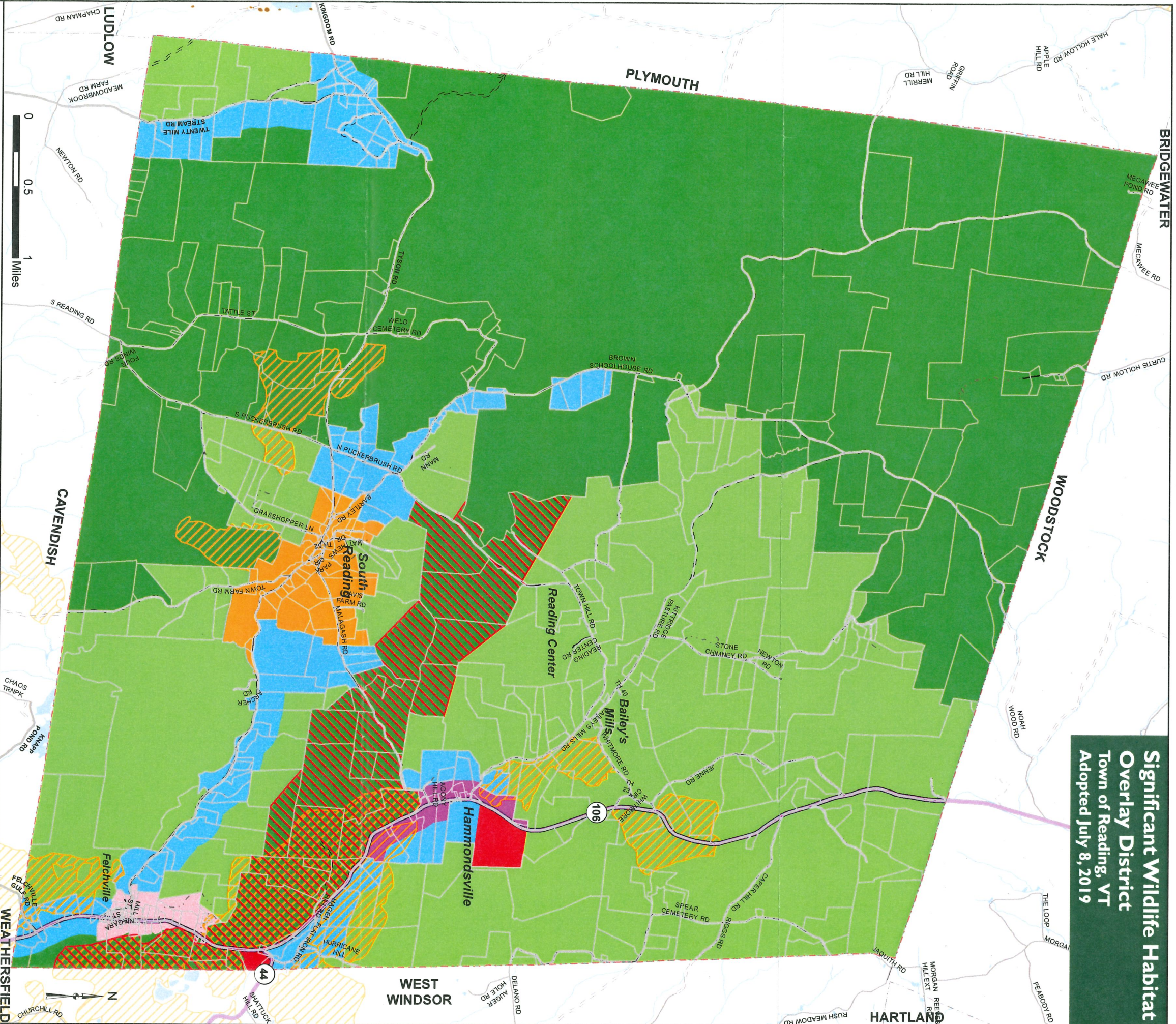


**Significant Wildlife Habitat
Overlay District
Town of Reading, VT
Adopted July 8, 2019**



Zoning Districts

- Rural/ Conservation (RC-25)
- Rural Residential (RR-10)
- Rural Residential (RR-5)
- Residential (South Reading) (R-1)
- Residential/ Commercial (Hammondsville) (RC-A)
- Residential/ Commercial (Felchville) (RC-B)
- Industrial/ Mining (IM)

Significant Wildlife Habitat Overlay District

- Wildlife Travel Corridor
- Deer Wintering Area (ANR 2011)

- VT State Highway
- Class 2 Town Highway
- Class 3 Town Highway
- Class 4 Town Highway
- Legal Trail (Reading only)
- Private Road (Reading only)
- River or Stream
- Lake or Pond
- Parcels (TerraMap 2016)
- Town Boundary

VT State Plane, Meters, NAD 83
Data depicted on this map are for
planning purposes only and are
based on best available information.
Some of the data do not line up.

Data Sources:
Zoning (Adopted July 8, 2019),
Proposed Wildlife Overlay District
(Adopted July 8, 2019),
Conserved Public and Private Lands
(UVM 2010, ANR 2012 and Town
2012), Deer Wintering (ANR 2011),
Waterbodies (VHD 2008), Road
centerline (VT-Trans 2015), Parcels
(TerraMap 2016), Town Boundaries
(RPC 2011 and VCGI 2012).



SOUTHERN WINDSOR COUNTY
REGIONAL PLANNING COMMISSION
P.O. Box 320, Ascutney, VT 05030
802-674-9201 www.swcrpc.org

For planning purposes only
Not for regulatory interpretation
Map last revised: July 27, 2019

Proposed Wildlife Overlay District is a combination of the Deer Wintering Area and the Wildlife Travel Corridor.